



Safeguarding Forum

Monday 9th January 2023 7pm

(Via ZOOM)

Welcome!

Agenda

1. Welcome and Introductions
2. Policy update
3. Trevor's Story – followed by discussion
4. Training
5. Andrea's story - reflections
6. AOB



Safer Recruitment Policy, Procedures and Guidance



July 2021
2021 Edition

The **Methodist** Church 

Updated October 2022

The Safer Recruitment Policy was updated in October 2022.

https://www.methodist.org.uk/media/27465/safer_recruitment_policy_final_oct_2022.pdf

The following slides show some helpful additions to the policy – two charts clarifying which level of DBS is required in different circumstances.

As always these things cannot be totally comprehensive and we sometimes need to find a “best fit”.

Table 1.3 Working with Children and Young People

Activity	Period/Duration	Type of Check
Teaching, training or instruction, care or supervision of children e.g. during weekend services and religious festivals	More than 3 days in a 30 day period OR overnight between 2am & 6am with the opportunity for face- to-face contact with children	Enhanced DBS check with a Children's Barred List check
Providing advice and guidance wholly or mainly to children in relation to their emotional, physical or educational wellbeing – e.g. advice on staying healthy while fasting, educational advice when considering a life of faith or emotional guidance when going through difficult times in life such as bereavement	More than 3 days in a 30 day period OR overnight between 2am & 6am with the opportunity for face- to-face contact with children	Enhanced DBS check with a Children's Barred List check
Anyone who drives children or young people.	More than 3 days in a 30-day period	Enhanced DBS check with a Children's Barred List check
Youth Worker who is not supervised by someone with an Enhanced DBS check including Barred List	More than 3 days in a 30-day period	Enhanced DBS check with a Children's Barred List check
Anyone who has responsibility for the day-to-day management of people (paid or volunteers) who undertake regulated activities	The same level of check is required as the person/people they are managing/supervising.	Enhanced DBS check with a Children's Barred List check
Teaching, training or instruction, care or supervision of children	Up to three times a month	Enhanced DBS check <u>without</u> a Children's Barred List check
Youth Worker who is closely <u>supervised</u> by someone with an Enhanced DBS check including Barred List.	Duration not specified, as the key element is the supervision.	Enhanced DBS check <u>without</u> a Children's Barred List check
A member of leadership, caretaker e.g. role is limited to strategy/policy or cleaning, locking up/general maintenance of building. However, higher level checks would be required if the premises included an Ofsted registered nursery.		Basic DBS

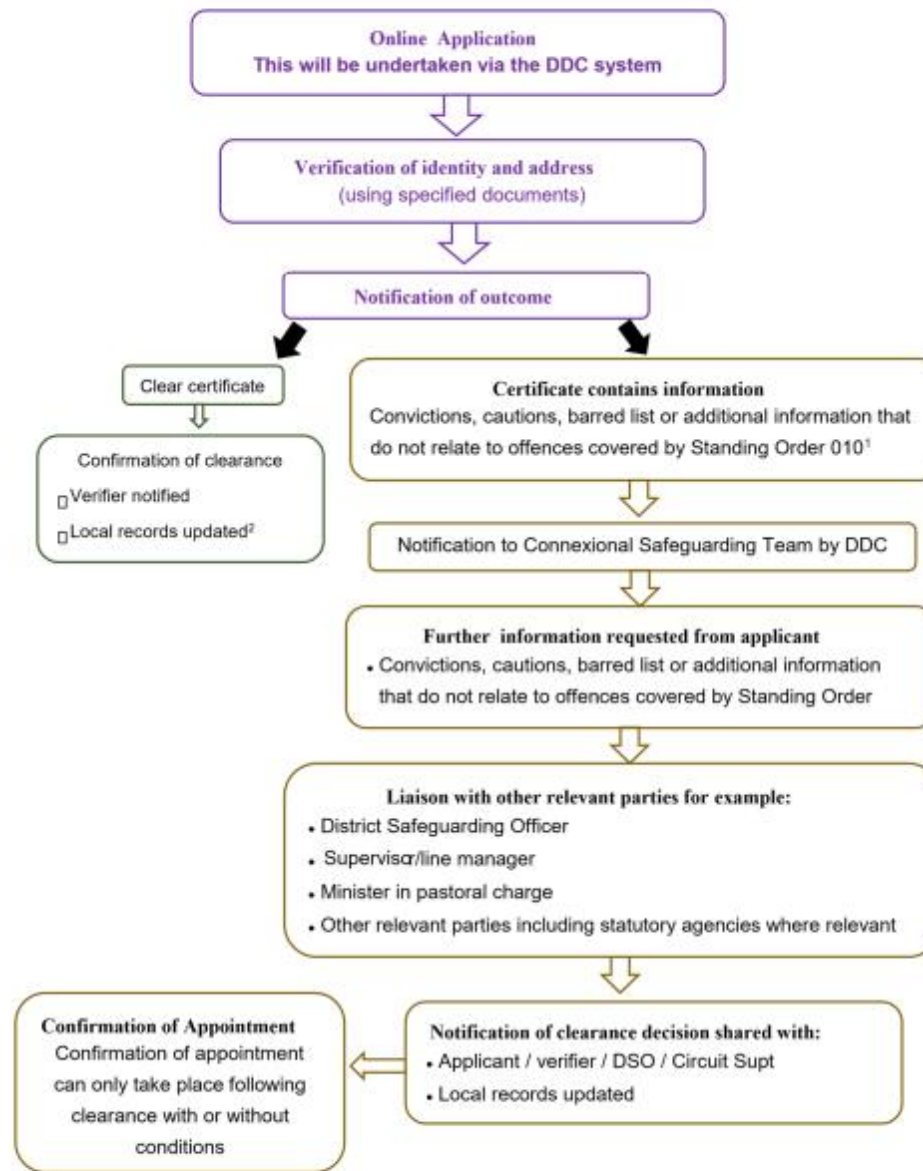
This document outlines the procedures for undertaking DBS checks within the Methodist Church in England and Wales and Isle of Man. For Scotland, please refer to **the Guide to PVG and the Methodist Church in Scotland (2020)** which is available on the Methodist Church website: <https://www.methodist.org.uk/safeguarding/recruitment-dbspvg-forms-etc/safer-recruitment-policy-and-practice-guidance/>. All applications must go via the Church's DBS provider, Due Diligence Checking (DDC) outlined in [Appendix B](#). For further information on both DBS and PVG applications: DDC [Quick Start Guide PVGChecks](#), <https://www.ddc.uk.net/>

Table 1.4 Working with Vulnerable Adults

Activity	Type of Check
Physical assistance with eating, drinking, toileting, washing, bathing, dressing, oral care or the care of skin, hair or nails for adults who can't carry this out themselves because age, illness or disability	Enhanced DBS check with an adults barred list check
Prompting and then supervising with eating, drinking, toileting, washing, bathing, dressing, oral care or the care of skin, hair or nails for adults who can't decide to do this for themselves because of age, illness or disability	Enhanced DBS check with an adults barred list check
Providing health care by, or under the direction or supervision of, a regulated health care professional	Enhanced DBS check with an adults barred list check
Training, instructing, providing advice or providing guidance on how to physically assist an adult with eating, drinking, toileting, washing, bathing, dressing, oral care or the care of skin, hair or nails for adults who can't carry this out themselves because age, illness or disability	Enhanced DBS check with an adults barred list check
Providing social work by a social care worker to an adult who is a client or potential client	Enhanced DBS check with an adults barred list check
Conveying adults to, from or between health care, personal care and/or social work services who can't convey themselves because of their age, illness or disability	Enhanced DBS check with an adults barred list check
Day-to-day management or supervision of anyone carrying out the above activities	Enhanced DBS check with an adults barred list check
Assisting an adult who cannot manage themselves because of their age, illness or disability with the day-to-day running of their household relating to: – managing the adult's cash; – paying the adult's bills; – shopping.	Enhanced DBS check with an adults barred list check
Assistance in the conduct of an adult's own affairs, where: – a lasting power of attorney is created – an enduring power of attorney is registered or applied for – the Court of Protection has made an order in relation to the making of decisions on the adult's behalf – an independent mental health or mental capacity advocate is appointed – independent advocacy services are provided – a representative is appointed to receive benefits payments on the adult's behalf	Enhanced DBS check with an adults barred list check
Transporting vulnerable adults to and from church on behalf of the Church	Enhanced DBS check without an adults barred list check
Care of any description or assistance provided to an adult by reason of his age, health or any disability, which is provided to the adult in the place where they are, for the time being, living, whether provided continuously or not	Enhanced DBS check without an adults barred list check
Conveying of an adult to or from church services as part of an agreed arrangement	Enhanced DBS check without an adults barred list check

Further details on the procedures for undertaking a DBS in specific circumstances can be found [here](#).

APPENDIX A – FLOW CHART METHODIST CHURCH DBS PROCESS

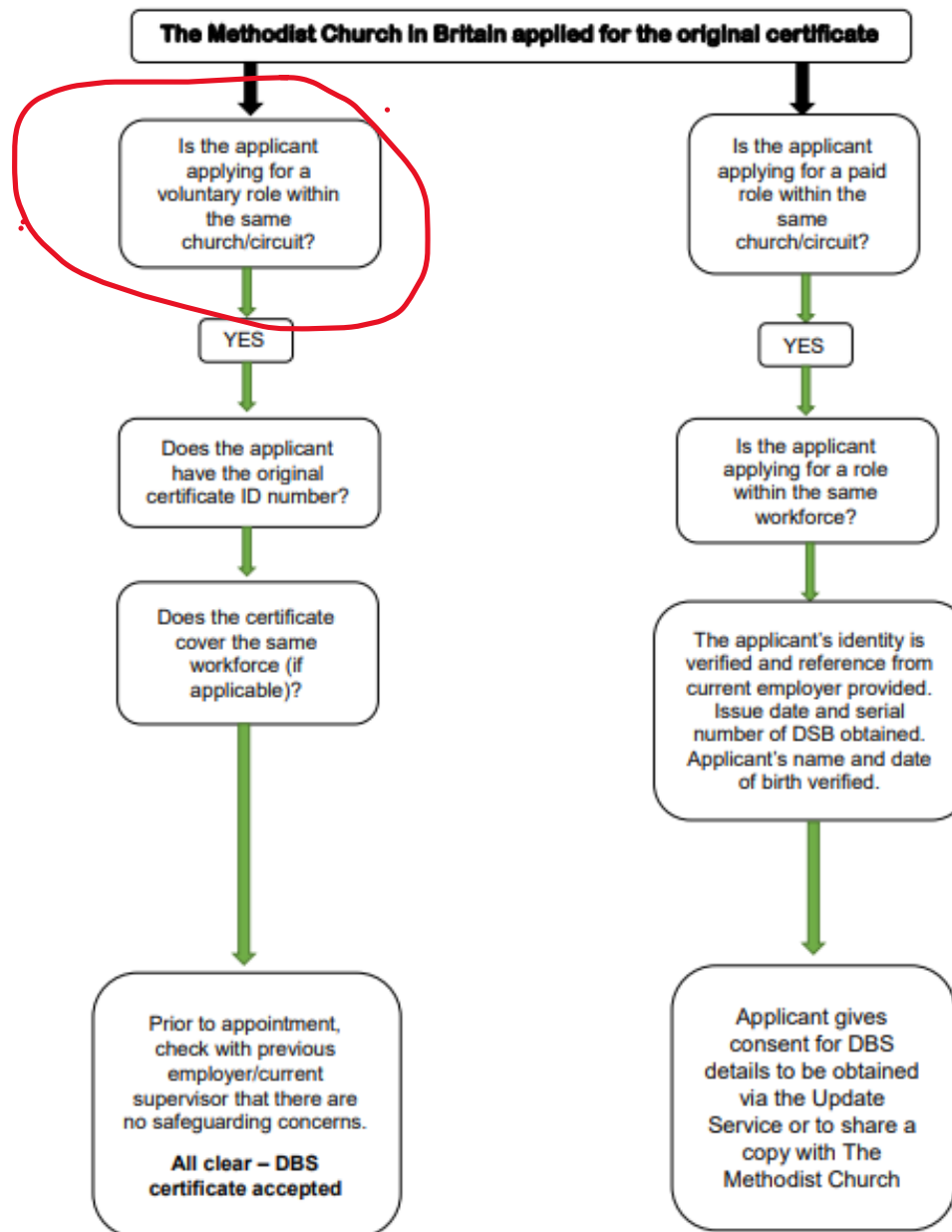


This flow chart shows the procedure for applying for a DBS.

In situations where the certificate reveals offences subject to restrictions of appointment under Standing Order 010, the Connexional Safeguarding Team will undertake a review to consider any safeguarding risk relevant to planned engagement with the Church.

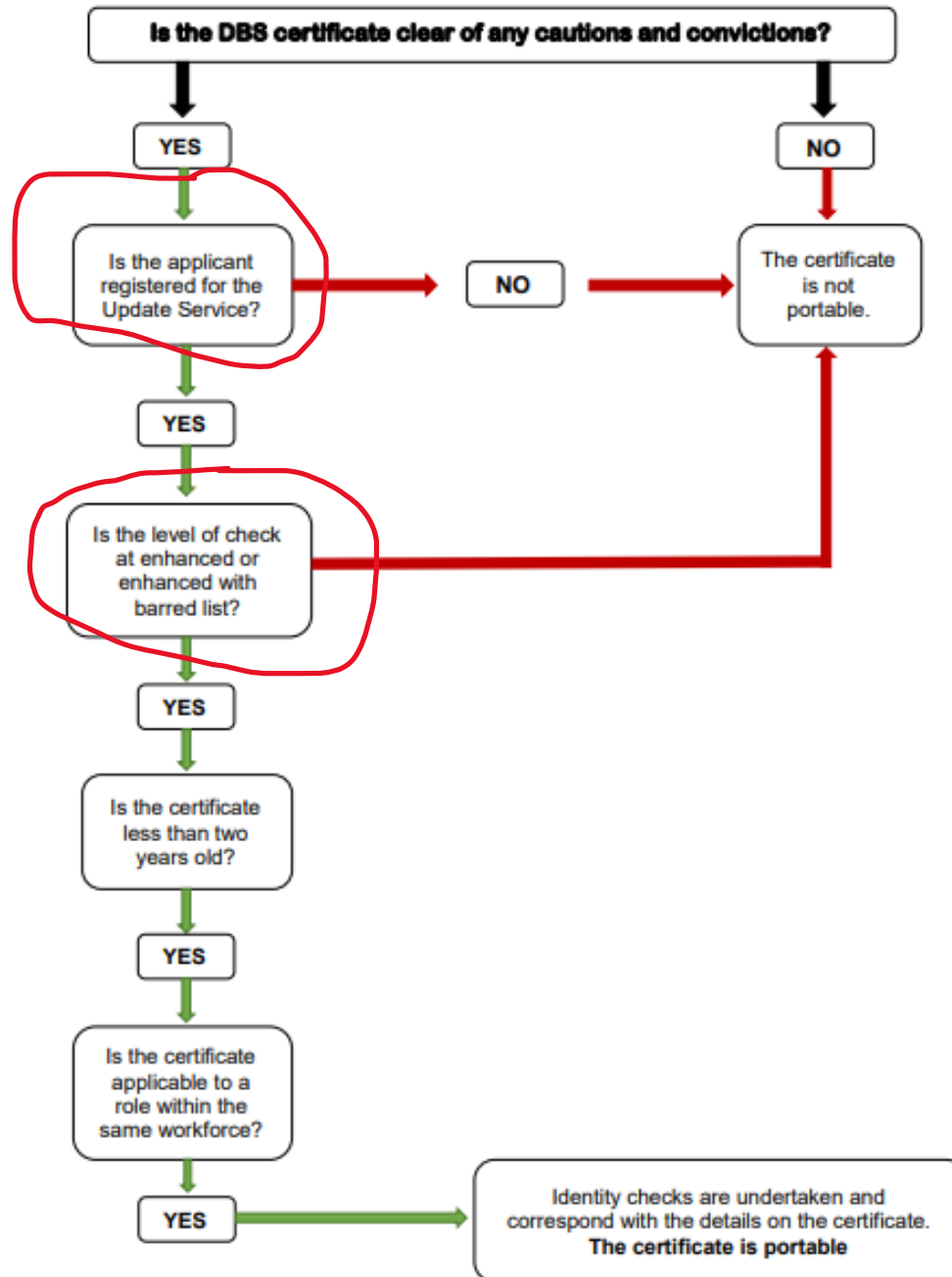
² Standing Order 010 provides details of offences for which restrictions of appointment apply for certain roles in the Methodist Church. ³ Records relating to DBS for ministers are held by the Connexional Safeguarding Team.

APPENDIX E – PORTABILITY OF CERTIFICATES WITHIN THE METHODIST CHURCH



There is some element of portability of DBS within the Methodist Church

APPENDIX E – PORTABILITY OF CERTIFICATES FROM EXTERNAL ORGANISATIONS



There is also some provision for portability from external organisations.

But please note this is limited still.

Note the identity checks are still required.

Before watching the video, think of some of the things which could make an adult vulnerable to exploitation and abuse.

Real Safeguarding Stories

[Home](#)[Participate](#)[Contact Us](#)

KEY TOPICS

- ☐ Scams
- ☐ Doorstep Crime
- ☐ Vulnerable Adult
- ☐ Financial Abuse

[GUIDANCE NOTES](#)

Trevor is virtually housebound and suffers with mobility problems. Increasingly lonely since the death of his wife, 68-year-old Trevor falls victim to a series of doorstep scams perpetrated by people who prey on his vulnerability. As the scams intensify, Trevor gradually realises the extent of the financial abuse.

<https://realsafeguardingstories.com/story/trevors-story-scams-and-doorstep-crime/>

How to keep yourself and others safe from scams

- **Be cautious and listen to your instincts.**
Never be afraid to delete, hang up or shut the door.
- **Don't assume everyone is genuine,** take your time and don't be rushed.
- **Be very wary of offers made during telephone cold calls** and **NEVER** give or confirm personal details.
- **Know who you're dealing with** and take a moment to think 'is my information and money safe?'
- **NEVER** deal with doorstep cold callers.
- **NEVER** click on links or open attachments in unexpected emails or text messages.
- **Your bank or the police will never ask for your bank details,** for you to withdraw cash to be collected or transfer money to another 'safe' account over the phone.
- **Protect your financial information,** especially from people you don't know. Think carefully before giving bank details and **NEVER** share your PIN number with anyone.

#NorfolkScamAware



Report or get advice on scams:

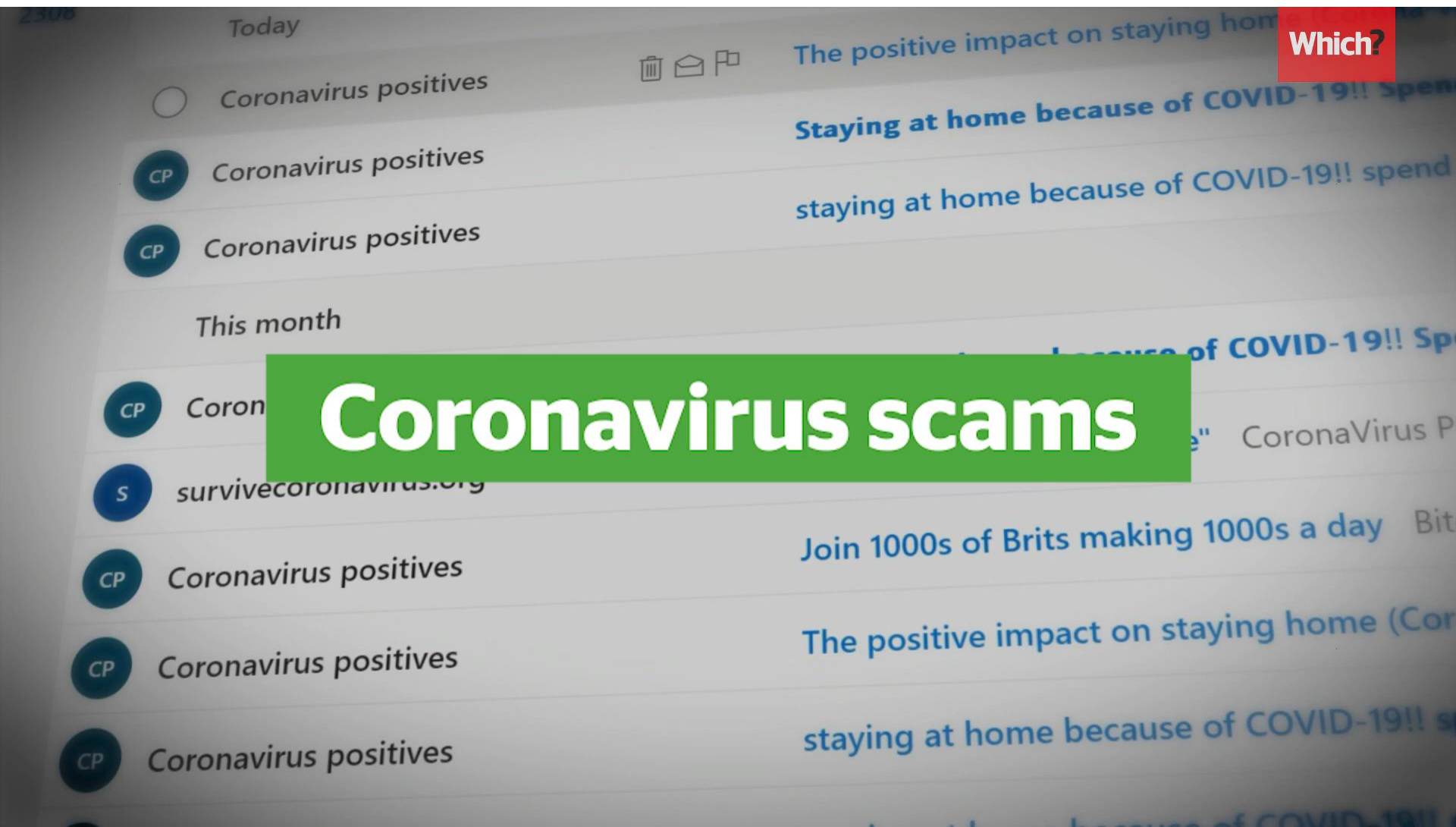


- **Citizens Advice consumer helpline**
Provides advice and shares information with Trading Standards.
☎ 0808 223 1133
🌐 www.citizensadvice.org.uk/consumer
- **Action Fraud**
Report all types of scams to Action Fraud, the UK's national reporting centre for fraud.
☎ 0300 123 2040
🌐 www.actionfraud.police.uk
- **Norfolk Police**
If a crime is happening now or recently occurred. If the victim is vulnerable or unable to protect themselves from fraud.
☎ 101
🌐 www.norfolk.police.uk
- **Norfolk Scams Prevention Service**
Offers specialist help and support if you've been the victim of a scam.
☎ 0300 303 3706
🌐 www.nsvictimcare.org

<https://1drv.ms/b/s!AusfwHBbOhlqwTbHz82O-nh-nylg?e=cj6IDc>

This short video is dated as it relates a lot to Covid but contains helpful practical tips about email scams and general advice.

<https://www.which.co.uk/news/article/coronavirus-scams-how-to-spot-them-and-stop-them-a8qsC6g1vqJl>



The face of the new Advanced Module! Being piloted in East Anglia in February and launched in April.

Advanced Module
2023 Edition

Welcome



Facilitators:

Advanced Module 2023

The **Methodist** Church
Safeguarding



Both online and face to face sessions will cover identical material.

Face-to-face Training

This is split into three parts:

- Unit 1 - 1 hour 30 minutes
- Core learning session (Units 2-5) - minimum of 4 hours taught
- Handbook – to support learning during Advanced Module and for further study and resources.

Online Training:

This is also split into three parts:

- E-learning (units 1-5a) - approximately 4 to 7 hours which can be completed in smaller sections. Alongside the e-learning participants complete a Workbook which they then take to the Gathered session.
- Gathered Session (Unit 5b) – a 2 hour facilitated session to consolidate learning from Advanced Module (online) e-learning.
- Handbook – to support learning during Advanced Module and for further study and resources.

This is a much harder watch. Questions to ask – could Andrea have done something sooner? When? What about the doctor? The registrar?
What about the Lasting Power of Attorney?

Real Safeguarding Stories

Home

Participate

Contact Us

Andrea's Story – Predatory Marriage



KEY TOPICS

- > Predatory Marriage
- > Dementia
- > Safeguarding Procedures
- > Capacity and Consent

GUIDANCE NOTES

<https://realsafeguardingstories.com/story/1085/>

Some other useful resources:

www.wearehourglass.org

www.realSafeguardingstories.com

Ann Craft Trust – “Staying Safe from Fraud and Scams”

National trading Standards Scams Team

