

# **EDI Officer Newsletter Issue Two**

**8 September 2025**





**Dear EDI Officers,  
thank you for all you do, in Districts, Circuits, and Local Churches.  
Your conversations, and advocacy opens doors for people every week.**

**We'd kept the issue focused, supportive and useful,  
bringing you the following items:**

- Meet the Team! Profile series, featuring Bevan Powell, Director for Inclusion
- Around the Connexion, featuring wonderful images representing welcome and inclusivity from the Ceredigion Circuit
- Quick Pulse, a 90 second check in, tell us what you need next
- Your EDI Win, share a short success and a photo (with consent)
- Peer Support Circle, send a dilemma for peer advice at our next meeting
- A quick user guide in setting up and taking part in Zoom and Teams meetings
- Training and dates, from the Learning Network
- Additional dates for your diary
- Recruitment to the Solidarity Circles, details and deadline
- And a Thought for the day



## **Meet The Team! - Profile Series**



**Bevan Powell - Director of Inclusion**

### **1. Please share a bit about yourself and your background**

I've always felt a strong calling to challenge injustice. That sense of purpose was shaped during my years in the Metropolitan Police and later as a local councillor in London. Both experiences opened my eyes to the importance of fairness, representation, and the need to create spaces where every voice is valued.

### **2. What is your role within the Connexional Team?**

Today, I serve the Church in my role as the Director for Inclusion within the Connexional Team. My role isn't just about implementing the Justice, Dignity and Solidarity (JDS) strategy but extends across the whole life of the Church, helping to contribute to the building blocks and guidance that provide every member the opportunity to flourish within the full life of Church, and facilitate the embedding of inclusion in every aspect of our mission and practice.

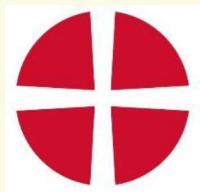
### **3. What's the most exciting project you have worked on?**

The most exciting project I've been part of so far has undoubtedly been the JDS strategy itself. Working alongside so many talented and passionate volunteers has

been a privilege. Their energy and commitment and discipleship has inspired me daily, together working towards the aspiration of becoming a truly inclusive Methodist Church and one that reflects the breadth and richness of diversity in our communities.

#### **4. What's your most favourite way of unwinding after a busy day at work?**

After a busy day, I exhale by seeking calm in nature. If I have the chance to walk along the Thames or a local canal, I take it. Water has a calming effect that gives me space to reflect, reset, and obtain a sense of renewal.



## **The Affirmations Scheme**

Within each edition this year we would like to feature a good news story and also give updates on the Affirmations Scheme. For those of you that are not aware of this just yet, a very helpful introduction to this can be accessed via this link

[Bedfordshire, Essex and Hertfordshire District : BEH Affirmations Scheme](#)

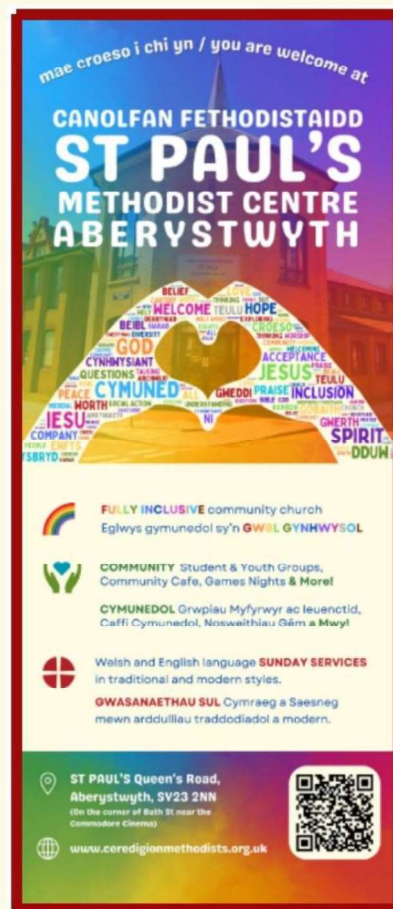
Many thanks to Stuart Watkin, EDI Learning Development Officer, for providing this introduction through his work with the BEH District. If your District or Circuit are in the process of working towards this and you are willing to feature in the newsletters, do let me know.

We're particularly keen to receive examples of icons, symbols and flags you have used within your churches, do send your photos.

We're glad to feature here a collection of stunning designs from the Ceredigion Circuit, sent through to us from Harriet, Ceredigion's Circuit PA and EDI Officer.



Welcome postcard design (front) used in church, community events, handouts etc.

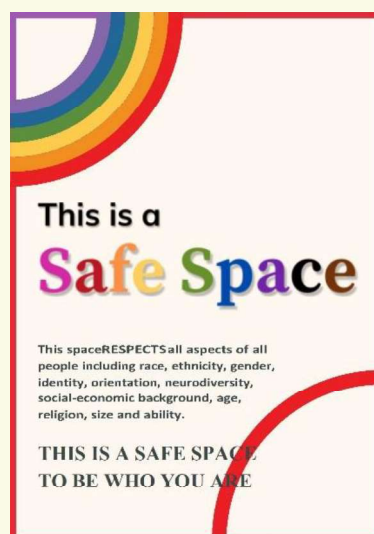


Design for  
St Paul's  
Roller Banner

Usually displayed in  
Church foyer

Often taken out to  
community events,  
university fairs etc

Safe Space Poster - Prominently displayed inside and outside of our circuit churches



**Poster for Inclusive Christian Gathering** Circuit run student group in partnership with Aberystwyth University.



**Poster for Transgender day of Remembrance:**

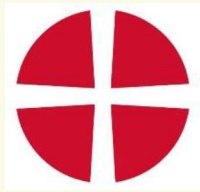


Posters / Flyers for Transgender Day of Remembrance (TDOR)

(Various )







## The Learning Network

This coming year we have a broader than ever programme of “Equipping for Equality” events. Please do take a look and book on yourself as well as advertise them far and wide: [Equipping for Equality by Methodist Learning Network | Eventbrite](#).

In addition to some of our ‘staple’ workshops such as “An Introduction to Cultural Intelligence” (Mar 18th) and “A Guide to the Inclusive Language Guide” (July 9th) we have some new topics and speakers. We’re delighted to have Vikki Pestell share her wisdom about “What it means for our churches to be sensory space aware” (Feb 10th); Sharon Nugent will be leading a session entitled “Becoming an Intercultural Church” (May 12th); Revd Jonny Bell is offering his Neurodiversity Awareness training later this year and Fiona Fidgin will be starting the programme with a discussion about Artificial Intelligence and Equality, and if it helps or harms (Sept 16th).

For those of you who are thinking about showing the film “After the Flood: The Church, slavery and reconciliation” and having some conversations about reparations, we are holding an evening on Oct 13th. This will be an opportunity to consider how you and others might feel about the film, with tips on supporting those who find the subject emotive.

There are also three opportunities for people who want to attend an online session of the Unconscious Bias training, so if you know of anyone who hasn’t completed this training, the dates are here: [Unconscious Bias Training by Methodist Learning Network | Eventbrite](#) and also included below:



**Equipping for Equality Programme – all here:**

[Equipping for Equality by Methodist Learning Network | Eventbrite](#)

Tues Sept 16th [Does Artificial Intelligence help or harm? Registration, Tue 16 Sep 2025 at 19:00 | Eventbrite](#) by Fiona Fidgin

Mon Oct 13th [Showing 'After the Flood': Thinking well about yourself and attendees Registration, Mon 13 Oct 2025 at 19:00 | Eventbrite](#) by Jenna Thorne, Stuart Watkin and Revd Carla Quenet

Thurs Nov 13th [Neurodiversity awareness Registration, Thu 13 Nov 2025 at 19:00 | Eventbrite](#) by Revd Jonny Bell

Thurs Dec 4th [Equality Impact Assessments explained Registration, Thu 4 Dec 2025 at 19:00 | Eventbrite](#) by Bevan Powell

Tues 10th Feb [What does it mean for our churches to be sensory space aware? Registration, Tue 10 Feb 2026 at 19:00 | Eventbrite](#) by Vikki Pestell

Weds 18th March [An Introduction to Cultural Intelligence Registration, Wed 18 Mar 2026 at 19:00 | Eventbrite](#) by Sharon Nugent

Mon 20th April [Reimagining masculinity: Creating safer spaces for all Registration, Mon 20 Apr 2026 at 19:00 | Eventbrite](#) by Revd Simon Sutcliffe

Tues 12th May [Becoming an Intercultural Church Registration, Tue 12 May 2026 at 19:00 | Eventbrite](#) by Sharon Nugent

Thu 9th July [Guide to the Inclusive Language Guide Registration, Thu 9 Jul 2026 at 19:00 | Eventbrite](#) by Kristie Eve and Stuart Watkin

We look forward to seeing you at any of these events and as always, please do let us know what else might help equip you in your role.

**Kristie and Stuart, Learning Network**



## Notice Board

### Quick Pulse...

**a check-in where you tell us what support you need and flag any immediate priorities**

What support would you welcome in this space?

- Policy updates
- Training
- Templates

Send your thoughts to [equality&diversity@methodistchurch.org.uk](mailto:equality&diversity@methodistchurch.org.uk)

## **Your EDI Win...**

**invites you to share a short success from your context.**

One or two lines and a photo with consent, so we can spotlight practical ideas other can use next month.

We look forward to hearing from you  
[equality&diversity@methodistchurch.org.uk](mailto:equality&diversity@methodistchurch.org.uk)

## **Peer Support Circle...**

Share a real scenario you would like to discuss, keep it brief, and get practical peer advice you can use right away.

- Send 2 to 3 sentences, what happened, what you tried, and the question you want help with.
- Remove names and identifiers, include any access or safeguarding factors we should consider.
- Submit by Wednesday 17th September to [equality&diversity@methodistchurch.org.uk](mailto:equality&diversity@methodistchurch.org.uk)
- We discuss the scenarios at the next online meeting, the owner of the scenario gives a 60 second intro, then the group offers options and resources.
- After the meeting you receive a one page summary of suggestions, links to tools, and an optional follow up slot with the JDS team.

## **Zoom and Teams User Guides**

Click on the link below for a quick guide to run and participate in inclusive meetings on Zoom and Microsoft Teams, with steps for hosting, access, sharing and follow up.

[Zoom and Teams Guide](#)

## **An advertisement for recruitment to the Solidary Circles:**

### **Join a Solidarity Circle and work towards a fully inclusive Church – a volunteer role**

These small supportive online groups bring together people to share experiences, offer mutual support, and raise important issues with Church leadership. The groups are coordinated by volunteers and play an important consultative role in the Church's work.

For the Role Description, Terms of Reference, and the Expression of Interest form, see the link below.

#### **[Advertisement & Documents](#)**

If you have any questions, please contact a coordinator for the following groups:

- Carers, Sue Spencer, [sccarers@methodistchurch.org.uk](mailto:sccarers@methodistchurch.org.uk);
- Disability, Mo Onyatt, [scdisability@methodistchurch.org.uk](mailto:scdisability@methodistchurch.org.uk);
- LGBT+, Pam Gold, [sc-lgbt@methodistchurch.org.uk](mailto:sc-lgbt@methodistchurch.org.uk);
- Racial Justice, Kennedy Gondongwe, [scracialjustice@methodistchurch.org.uk](mailto:scracialjustice@methodistchurch.org.uk);
- Rural Communities, Sarah Hulme, [equality&diversity@methodistchurch.org.uk](mailto:equality&diversity@methodistchurch.org.uk)
- Women, Irene Hayes, [scwomen@methodistchurch.org.uk](mailto:scwomen@methodistchurch.org.uk).

The closing date for applications is **9am on Monday 6 October 2026**.

We look forward to hearing from you.

Kim Medford-Vassell - JDS Programme Coordinator

[equality&diversity@methodistchurch.org.uk](mailto:equality&diversity@methodistchurch.org.uk)



## Website Links

Follow the links below to Methodist items of interest.

If you would like to add links from your Circuit or District to this section, send an email to the following address – [equality&diverity@methodistchurch.org.uk](mailto:equality&diverity@methodistchurch.org.uk)

JDS Pages - [Strategy for Justice, Dignity and Solidarity - The Methodist Church](#)

The Learning Network Pages - [About the Learning Network - The Methodist Church](#)

Methodist News - [News - The Methodist Church](#)

The Connexion Magazine - [The Connexion magazine - The Methodist Church](#)

Prayer for Today - [A prayer for the day](#)

Methodist Publishing, order free A5 size copies of the booklet for you and your local church - [Strategy for Justice, Dignity and Solidarity](#)



## Contacts

**Contact the Team on the email addresses below:**

Bevan Powell - Director for Inclusion

[powellb@methodistchurch.org.uk](mailto:powellb@methodistchurch.org.uk)

Kim Medford-Vassell - JDS Programme Coordinator

[Medford-vassellk@methodistchurch.org.uk](mailto:Medford-vassellk@methodistchurch.org.uk) /  
[Equality&Diversity@methodistchurch.org.uk](mailto:Equality&Diversity@methodistchurch.org.uk)

Stuart Watkin - EDI Learning & Development Officer

[Watkins@methodistchurch.org.uk](mailto:Watkins@methodistchurch.org.uk)

Kristie Eve - Learning & Development Officer

[evek@methodistchurch.org.uk](mailto:evek@methodistchurch.org.uk)

Natalie Hastings - Administrator

[hastingsn@methodistchurch.org.uk](mailto:hastingsn@methodistchurch.org.uk)



## **Additional dates for your diary...**

### **2025 EDI Officer Meetings 7-8.30pm (online)**

Wednesday 24th September

Thursday 20th November

If you would like to be added to the mailing list to receiving joining information, contact Kim via [equality&diversity@methodistchurch.org.uk](mailto:equality&diversity@methodistchurch.org.uk)

### **2025 Connexional Council Meetings**

15 September - induction day

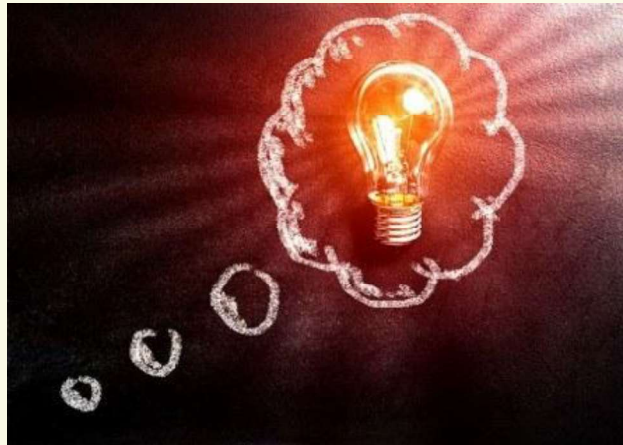
10 October

13 December

For information on Connexional Council and membership, visit the following page - [The Connexional Council - The Methodist Church](#)

- ❖ **Black History Month** - During the month of October
- ❖ **National Hate Crime Awareness Week** - 11th to 18th October
- ❖ **Inter Faith Week** - 9th to 16th November
- ❖ **UK Disability History Month** - 14th November to 20th December
- ❖ **International Day of Persons with Disabilities** - 3 December
- ❖ **Human Rights Day** - 10 December





## **Thought for the day..**

***"God's invitation to the feast is bigger than our fears of difference, greater than our prejudices"***

**Revd Sonia Hicks' Presidential Address to  
the Methodist Conference in 2021.**

**Today, let's extend the table, listen with patience  
and lift one another.**

**Your work turns invitation into belonging, and belonging into  
hope for our Church and communities.**